

NAME

REGION

LOCAL CLUB

Qualifications Sheet D-1 Rating

RIDING TEST EXPECTATIONS

Instructor should sign and date when achieved.

Candidate should ride in an enclosed area without leading line, demonstrating basic balanced position at the halt and walk and control at the walk and trot.

RIDING ON THE FLAT

Requirement	Instructor's Notes	Date	Initials
Mount & dismount, with assistance if necessary.			
Hold reins correctly.			
Shorten & lengthen reins correctly at the halt.			
Demonstrate basic correct position at the halt.			
Ride at the walk & trot, with control, keeping pony on rail.			
Demonstrate simple change of direction at the walk.			
Perform gradual transitions from walk to trot & walk to halt.			
Rider should demonstrate basic balanced position at the walk.			

RIDING OVER FENCES

Walk over poles on the ground in jumping position.			
Discuss with Examiner the reason for different positions when riding on the flat and over fences.			

D-1 PREP GUIDE HORSE MANAGEMENT

The candidate is a beginning-level horse manager, willing to learn the simple routine necessary for safe handling of quiet, well-trained horses. His or her knowledge will vary widely depending on age, educational level, and experience.

NOTE: The test will often ask for only a few of the multiple answers to the questions, but for this guide you should try to list as many answers as you can—even if only one or two are requested. Please practice verbalizing your answers with someone!

TURN-OUT/TACK

INSPECTION EXPECTATIONS

- Rider in safe & neat attire. Pony Club Pin.
- Pony neatly brushed.
- Feet picked out (with assistance) and showing farrier care.
- Tack safe & neat (properly adjusted with assistance if necessary).

Describe your tack cleaning procedures. (p. 253-258)

Know two reasons for cleaning tack: (p. 253)

Describe safe & unsafe riding attire. (p. 7-8, 24, 283-285)

SAFE

UNSAFE

STABLE MANAGEMENT

List some Do and Don't Notes for yourself in the following areas:
You will be asked to demonstrate these tasks for your rating test.

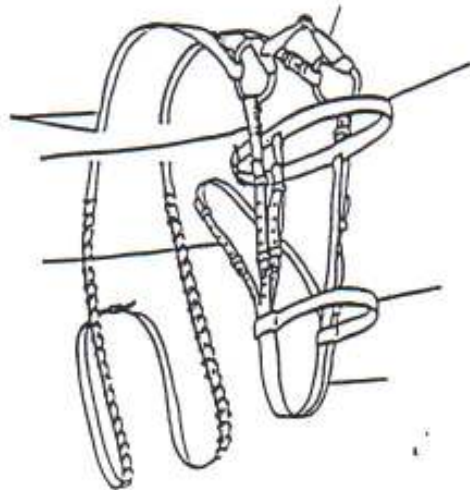
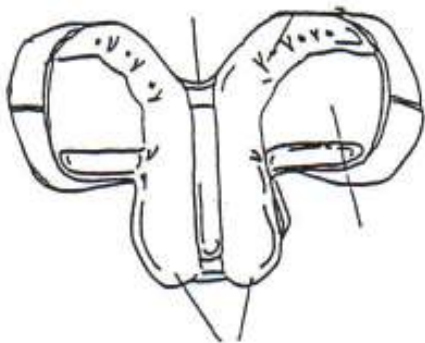
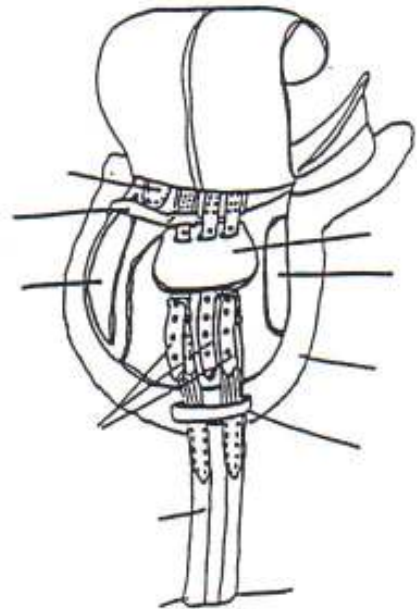
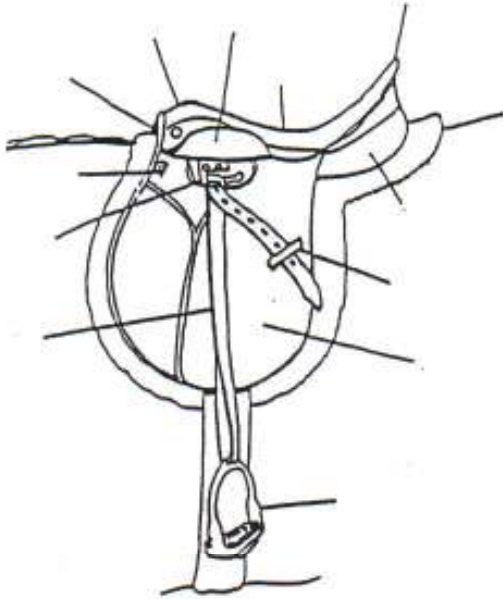
Groom with brush and currycomb. (p.170-173)

Pick out feet, with assistance if necessary. (p.170, 200-204)

Give one reason to pick out feet. (p. 199)

Tack up and untack pony, with assistance if necessary. (p. 148-158)

Name 10 parts of saddle & bridle (any): (p. 248-249)

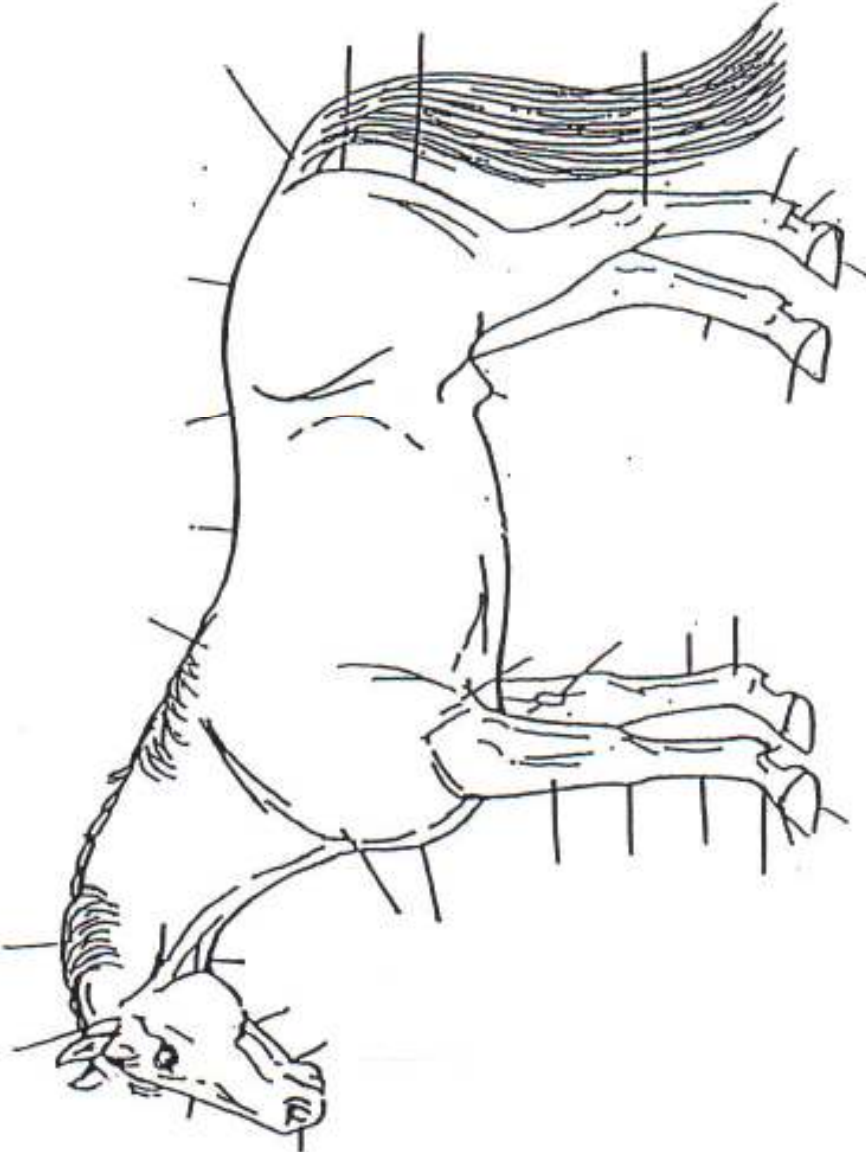


D-1 Rating

p. 4

PONY PARTS & CONFORMATION

Name any 10 parts of the pony. (p. 231)



LEADING/CONDITIONING/NUTRITION

List some Do and Don't Notes for yourself in the following areas.

You will be asked to demonstrate these tasks for your rating test.

Approach pony safely and put on halter. (p.131-134)

Lead and turn correctly and safely. (p. 135-138)

Know one reason for cooling out pony after exercise. (p. 155-157, 162-168)

Explain how to give water, grain, hay, & tidbit to pony safely. (p. 186-191)

HEALTH CARE/VETERINARIAN

Discuss what a veterinarian is. (p. 209)

Give one reason why the vet might treat your pony. (p. 209-216)

ROAD AND TRAVEL SAFETY

Know basic rules of safe riding in a group, in an enclosed area. (p. 219-220)